



The Xylanta SAINT3 family are the latest generation of products derived from the highly successful SAINT serial communications analysis tools originally developed by Delphi/Aptiv. These new products enhance the SAINT2 design by adding support for CAN-FD in addition to CAN 2.0B, whilst maintaining a high level of software and hardware compatibility with the older product.

The uSAINT3 is a flexible, cost-effective CAN bus monitoring and logging tool designed with the needs of software developers and system testers in mind. USB based and highly portable, it suits a wide range of situations. The communications interfaces can act as silent, packet monitors or have the ability to actively inject packets into the data streams.

It is supported by the included SAINT Bus Engine (SBE) and Bus Monitor. In addition an API is available allowing custom SBE plugins to be developed.

## Key Features

### Flexible Communications Tool

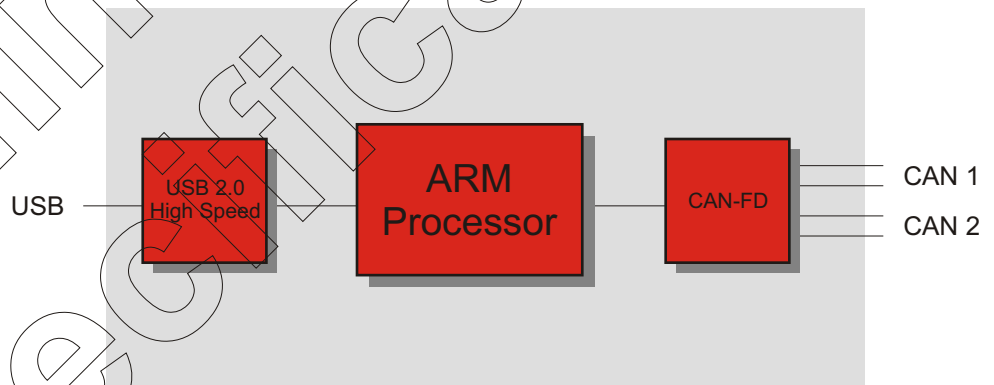
- Supports two simultaneously active CAN-FD buses
- All interfaces support non-intrusive monitor only mode
- Consistent time-stamping across all interfaces
- USB 2.0 High Speed, Bus Powered Device

### CAN Bus Features

- Two independent ISO CAN-FD controllers
- Software selectable bus speeds and termination
- Detects and reports a wide range of message/bus errors

### Application Software

- Integrates with the SAINT Bus Engine (SBE)
- SBE provides an open API for software plugins
- Includes Bus Monitor plugin
- Software supports Windows 7 and 10



## Applications

- Network diagnostics
- Logging via the Saint Bus Engine (SBE)
- Software download and firmware updates
- Gateway between buses
- Automation of message testing
- And many others...

# Product Specification

## General Features

- Onboard 32-bit ARM processor
- High Speed USB 2.0 interface (480mbps)
- 16-bit timestamp giving 1millisecond resolution
- Field upgradeable firmware design (flash firmware)
- CiA DS 102 Version 2.0 compatible 9 way male D-Type connector for interface wiring
- Powered via USB for ease of use

## CAN Bus Support

- Two independent ISO CAN-FD controllers with hardware filters
- Complies with CAN specifications 2.0 A/B and FD
- Dedicated FD (TJA1057) transceivers
- Support for ISO and non-ISO CAN-FD messaging
- CAN bit rates from 25 kbit/s up to transceiver limit with non-standard speeds supported
- Detects and reports a wide range of message/bus errors
- CAN/CAN-FD termination resistors software controllable

## Other

- Ships with USB cable and 9-way breakout board
- Operating temperature -10C to +80C, 85% RH (non condensing)
- Compact, robust metal case (80mm x 45mm x 25mm)
- Weight 125g
- FCC and CE compliant
- One year limited warranty

# Host Software Support

## General Features

- Fully compatible with existing SAINT2 applications

## CAN SAINT Bus Engine (SBE)

- Allow detection of all SAINT compatible devices
- Provides an interface for selection and connection

## Bus Monitor Plugin

- Provides a scrolling message monitor
- Enhanced to support CAN-FD messages
- Supports message filtering, scripting, emulation and logging

## J2534

- Enhanced J2534 interface with CAN-FD support

## SDK

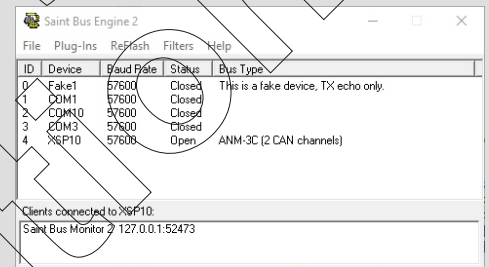
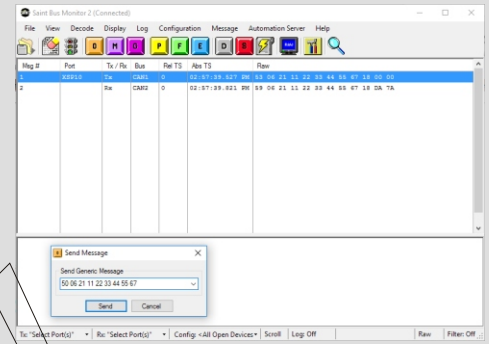
- Allows development of SBE plugins

## Other

- Requires Windows 7 or 10

# Order Codes

- S3U-0001      uSAINT3 with breakout board and 1m USB cable  
 S3U-0002      uSAINT3 without accessories



**For more information email: [sales@xylanta.com](mailto:sales@xylanta.com)**

The information contained herein is believed accurate at the time of writing and is subject to change without notice. Copyright © 2018 Xylanta Ltd. All rights reserved. Xylanta and DeskLab are trademarks of Xylanta Ltd. Rev.5 December 2018.

**Xylanta**  
Advanced Test Solutions

[www.xylanta.com](http://www.xylanta.com)